



Daikin One Lite Connected Thermostat Wi-Fi Connection Process

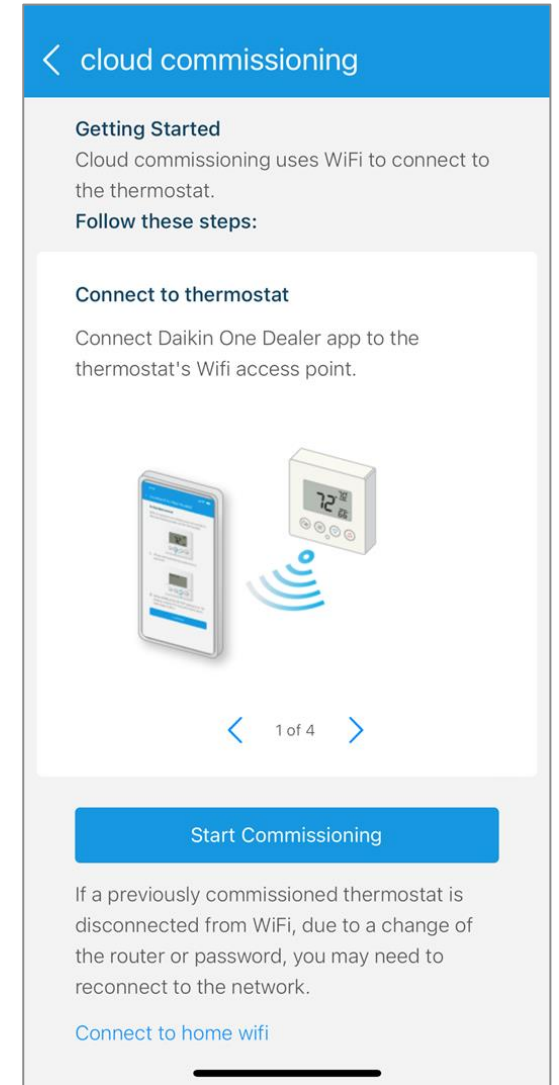
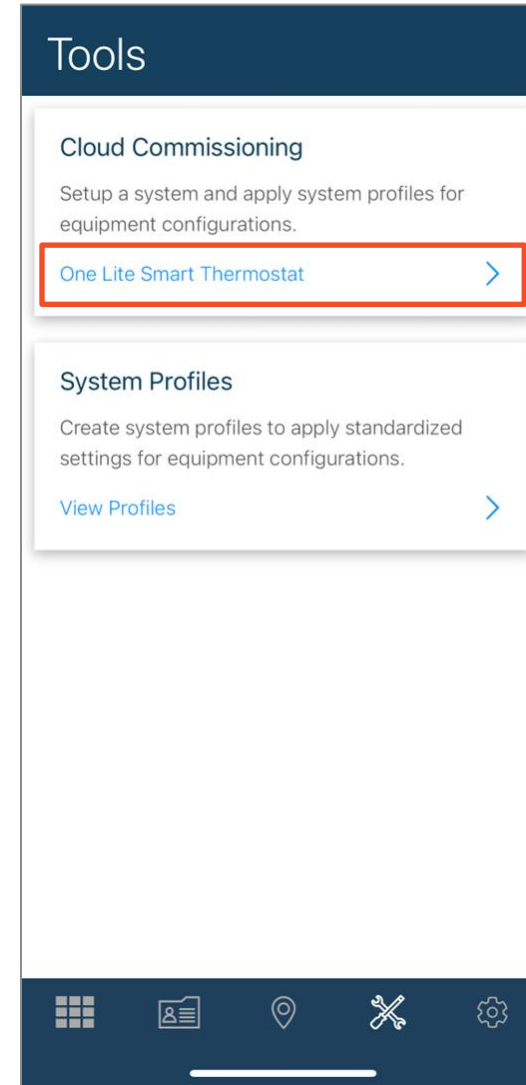


Disclaimer

This material provides technical information that is to only be used by appropriately trained and certified HVAC-R installers and technicians who have agreed to the terms and conditions available here at <https://www.daikincity.com/DaikinCityB2BTermsOfUse.html>. If you have not agreed to these terms and conditions, you may not use or view this material, and you assume responsibility for any injury or property, system or equipment damage which may result. If you have agreed to these terms, you also agree, by viewing or using this material, that this material, by its nature, cannot include a discussion of everything necessary to effect a proper installation or repair of HVAC-R equipment, nor can it address every possible scenario or environment a technician or installer may encounter. Accordingly, this material should not be considered as recommendations for best practices and will not be considered installation or repair instructions to the extent of any conflict with Daikin- or Goodman-issued manuals and specifications, or industry standards and regulations. Each installer or technician remains fully responsible for ensuring proper installation or repair of the HVAC-R equipment being worked on, and you remain fully responsible for any injury or property, system or equipment damage which may result from your installation. ©2023 Daikin Comfort Technologies North America, Inc., all rights reserved; recording, copying, or distribution of this material is prohibited without express written permission from Daikin.

Setup Thermostat

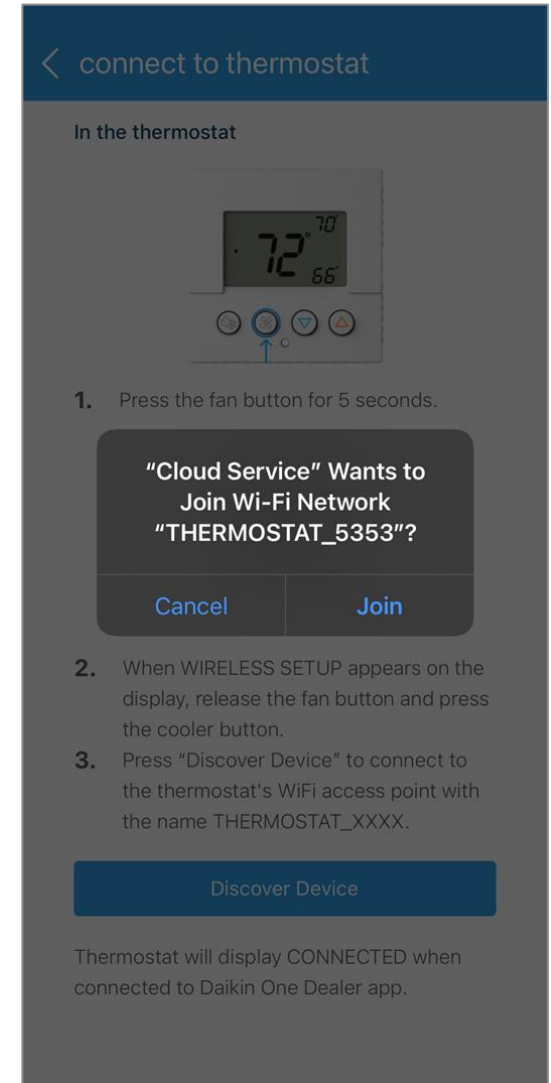
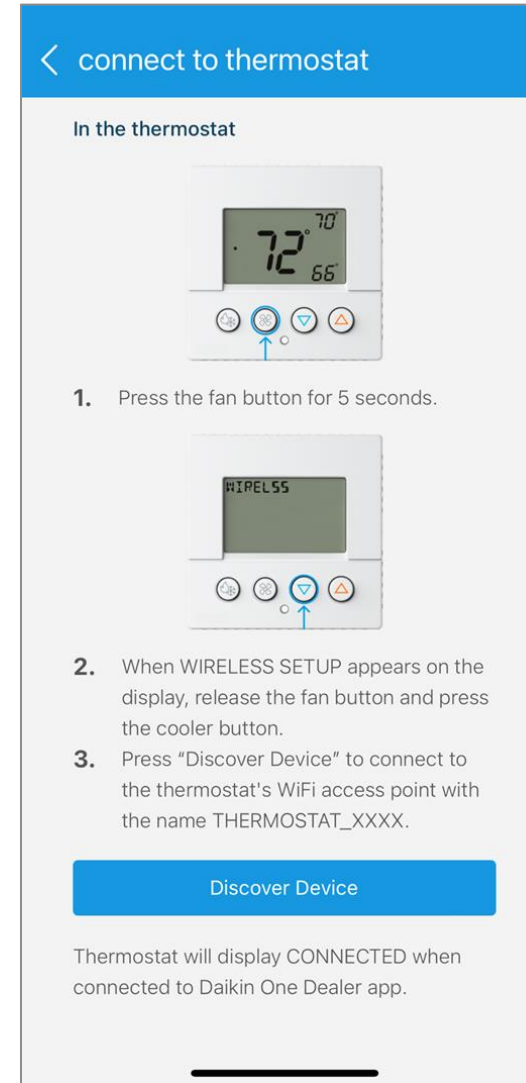
- Selecting “One Lite Connected Thermostat” allows the installer to complete the following steps:
 - Connect to thermostat
 - Select equipment
 - Make adjustments
 - Upload system profile
 - Configure home Wi-Fi
 - Finish setup



Connect App. to Thermostat Wi-Fi



- Press and hold the fan button for 5 seconds.
 - Release the fan button and press the down button to continue.
 - Approximately 10 seconds to enter AP mode.
- On your mobile device, tap “Discover Device”.
 - When connecting to the thermostat's access point, the mobile device **MUST** be within two feet.
 - Tap “Join” to pair the device with the thermostats network.



Connect to Wi-Fi

- Once the profile is sent to the thermostat, you will have the option to set up Wi-fi through the homeowners' network.

