

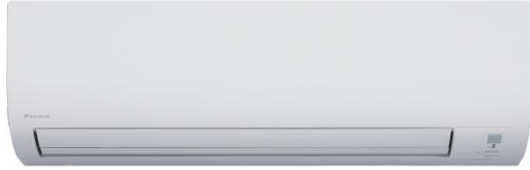
Job Name:	
Tag#	



Submittal Data Sheet

FTX09NMVJU / RXL09QMVJU

0.75-Ton Wall Mounted Heat Pump System



Complete warranty details available from your local dealer or at www.daikincomfort.com. To receive the 12-Year Parts Limited Warranty, online registration must be completed within 60 days of installation. Online registration is not required in California or Quebec. *If product is installed in a commercial application, limited warranty period is 5 years.*

Indoor Specifications

Airflow Rate (cfm)	Cooling		Heating	
	H	M	H	M
	L	SL	L	SL
	417	297	403	328
	244	141	251	215
Sound (dBA) H / M / L / SL	43 / 36 / 30 / 19		43 / 36 / 29 / 25	
Dimensions (H x W x D) (in)	11-1/4 x 30-5/16 x 8-3/4			
Weight (Lbs)	18			

Outdoor Specifications

Compressor	Hermetically Sealed Swing Type			
Refrigerant	R-410A			
Factory Charge	2.09			
Refrigerant Oil	PVE (FVC50K)			
Airflow Rate (cfm)	Cooling		Heating	
	H	M	H	M
	L	SL	L	SL
	1,105	865	922	777
Sound Pressure Level (dBA)	49			
Dimensions (H x W x D) (in)	21-5/8 x 26-9/16 x 11-3/16			
Weight (Lbs)	60			

Efficiency

Cooling		Heating	
SEER	20.0	HSPF	12.5
EER	12.5	COP	4.20

Performance

Cooling (Btu/hr)	
Rated (Min/Max)	9,000 (4,400 / 10,900)
Sensible @ AHRI	8,170
Moisture Removal gal/h	.32
Standard Operating Range	50°F – 115°F
Extended Operating Range*	-4°F – 115°F

Rated Cooling Conditions: Indoor: 80°F DB/67°F WB
Outdoor: 95°F DB/75°F WB

*With field settings and wind baffle

Heating (Btu/hr)	
1: @ 47° Rated (Min/Max)	10,900 (4,400 / 16,000)
2: @ 17° Rated	6,700
3: @ 5° Max: Capacity / COP	10,900 / 1.98
Operating Range	-13°F – 60°F

1: Rated Heating Conditions: Indoor: 70°F DB/60°F WB
Outdoor: 47°F DB/43°F WB
2: Rated Heating Conditions: Indoor: 70°F DB/60°F WB
Outdoor: 17°F DB/15°F WB
3: Heating Conditions; Compressor Operating at Max Frequency: Indoor: 70°F DB/60°F WB
Outdoor: 5°F DB/5°F WB

Electrical

	208/60/1	230/60/1
System MCA	9.5	9.5
System MFA	15	15
Compressor RLA	8.5	8.5
Outdoor fan motor FLA	.15	.15
Outdoor fan motor W	18	18
Indoor fan motor FLA	.20	.20
Indoor fan motor W	21	21

MFA: Max. fuse amps MCA: Min. circuit amps (A) FLA: Full load amps (A)
RLA: Rated load amps (A) W: Fan motor rated output (W)

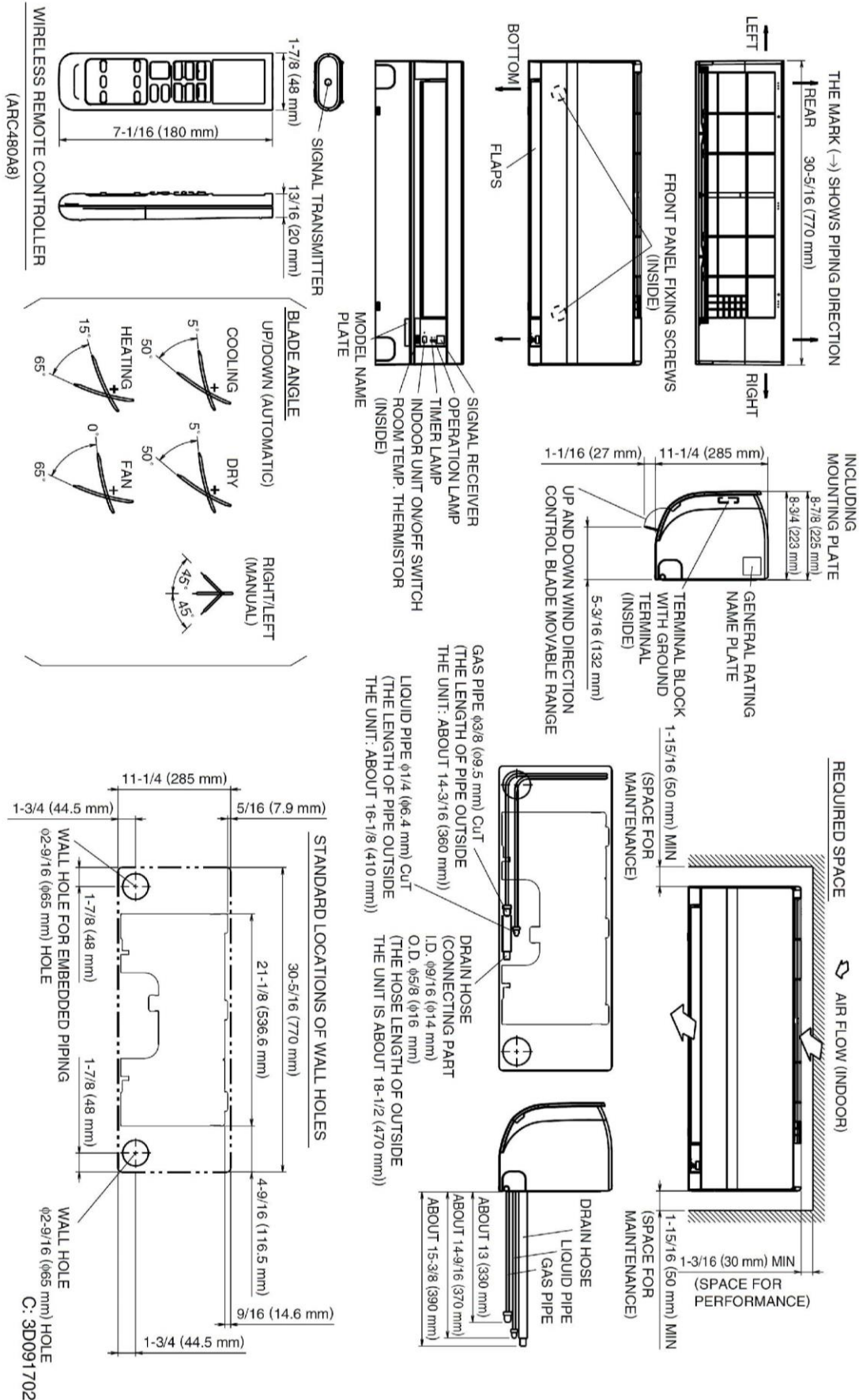
Piping

Liquid (in)	1/4
Gas (in)	3/8
Drain (in)	5/8
Max. Interunit Piping Length (ft)	65.625
Max. Interunit Height Difference (ft)	49.25
Chargeless (ft)	32.8
Additional Charge of Refrigerant (oz/ft)	.21

Daikin North America LLC 5151 San Felipe, Suite 500 Houston, TX 77056

(Daikin's products are subject to continuous improvements. Daikin reserves the right to modify product design, specifications and information in this data sheet without notice and without incurring any obligations)

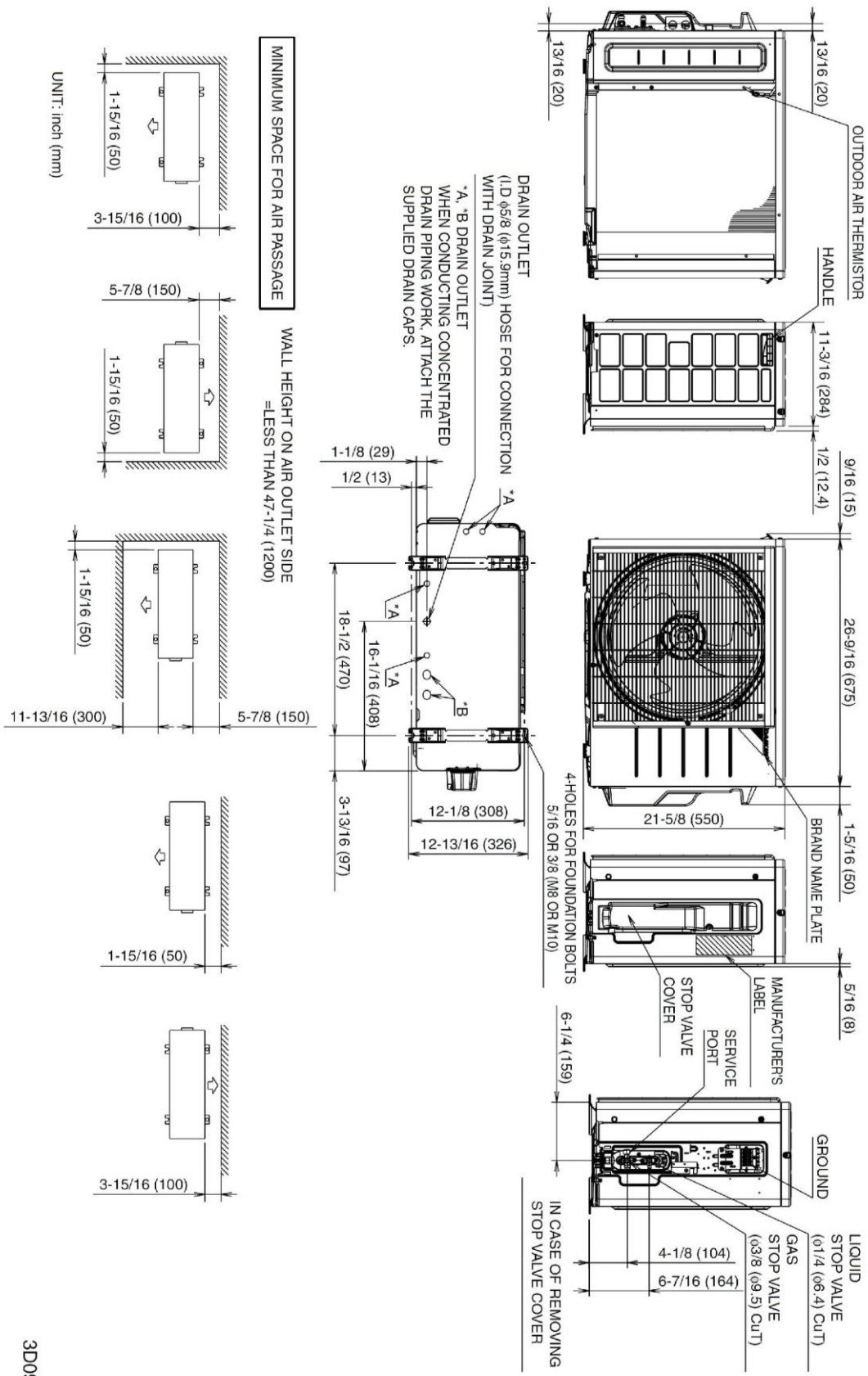
FTX09NMVJU Dimensional Data



Daikin North America LLC 5151 San Felipe, Suite 500 Houston, TX 77056

(Daikin's products are subject to continuous improvements. Daikin reserves the right to modify product design, specifications and information in this data sheet without notice and without incurring any obligations)

RXL09QMVJU Dimensional Data



3D092206A

Daikin North America LLC 5151 San Felipe, Suite 500 Houston, TX 77056

(Daikin's products are subject to continuous improvements. Daikin reserves the right to modify product design, specifications and information in this data sheet without notice and without incurring any obligations)

Submittal Revision Date: October 2021

Indoor Unit

Included	Part Number	Description
	AZAI6WSCDKB	DKN Residential Cloud Wi-Fi Adaptor for Single- and Multi-Zone System (S21)
	AZAI6WSPDKC	DKN Plus Interface
	DTST-ONE-ADA-A	Daikin <i>One+</i> Smart Thermostat for Ductless Products
	BRC944B2	Wired Remote Controller
	BRCW901A08	Wired Remote Controller Cable – 25ft
	BRCW901A03	Wired Remote Controller Cable – 10ft
	KRP067A41E	Adaptor for wired remote controller (09 & 12)
	KAF970A45	Titanium apatite photocatalytic air-purifying filter WITH frame
	KAF970A46	Titanium apatite photocatalytic air-purifying filter WITHOUT frame
	DACA-CP1-1	Inline Condensate Pump (Fits inside all Daikin wall & floor mount units)
	DACA-CP4-1	External Condensate Pump
	KRP928BB2S + KRP067A41E	Interface Adaptor for DIII-NET

Outdoor Unit

Included	Part Number	Description
	DACA-WB-1	Powder-Coated Wall-Mounted Bracket
	KPW937F4	Air direction adjustment grille (09 & 12)
	KEH067A41E	Daikin BMS Drain Pan Heater Small (09 & 12)
	KKG067A41	Back protection wire net (09 & 12)
	KPS067A41	Snow hood (intake side plate) (09 & 12)
	KPS067A42	Snow hood (intake rear plate) (09 & 12)
	KPS067A44	Snow hood (outlet) (09 & 12)
	KKP937A4	Drain Plug for OD Unit