



Submittal Data Sheet

1.5-Ton Inverter Ducted Unit

FTQ18PBVJURZQ18PVJU9

FEATURES

- Upflow or horizontal right configurations
- Field-installed electric heat options available from 3kW to 15kW
- 10 year limited parts and compressor warranty

BENEFITS

- Low ambient heat operation down to -4°F

INDOOR UNIT



OUTDOOR UNIT





Submittal Data Sheet

1.5-Ton Inverter Ducted Unit

FTQ18PBVJURZQ18PVJU9

SYSTEM PERFORMANCE

Indoor Unit Model No.	FTQ18PBVJU	Indoor Unit Name:	SKYAIR DUCTED UNITARY - PB
Outdoor Unit Model No.	RZQ18PVJU9	Outdoor Unit Name:	1.5-Ton SkyAir Heat Pump
Rated Cooling Capacity (Btu/hr):	18,000	Rated Cooling Conditions:	Indoor (°F DB/WB): 80 / 67 Ambient (°F DB/WB): 95 / 75
Sensible Capacity (Btu/hr):	15,100	Rated Piping Length(ft):	25
Max/Min Cooling Capacity (Btu/hr):	18,000 /	Rated Height Difference (ft):	98.00
Cooling Input Power (kW):	1.250	Rated Heating Conditions:	Indoor (°F DB/WB): 70 / 70 Ambient (°F DB/WB): 47 / 43
SEER (Non-Ducted/Ducted):	20.00 /	HSPF (Non-Ducted/Ducted):	12.0 /
EER (Non-Ducted/Ducted):	14.50 /	Heating COP (Non-Ducted/Ducted):	4.0 /
Rated Heating Capacity (Btu/hr):	20,000		
Max/Min Heating Capacity (Btu/hr):	/ 20,000		
Heating Input Power (kW):	1.47		

SYSTEM DETAILS

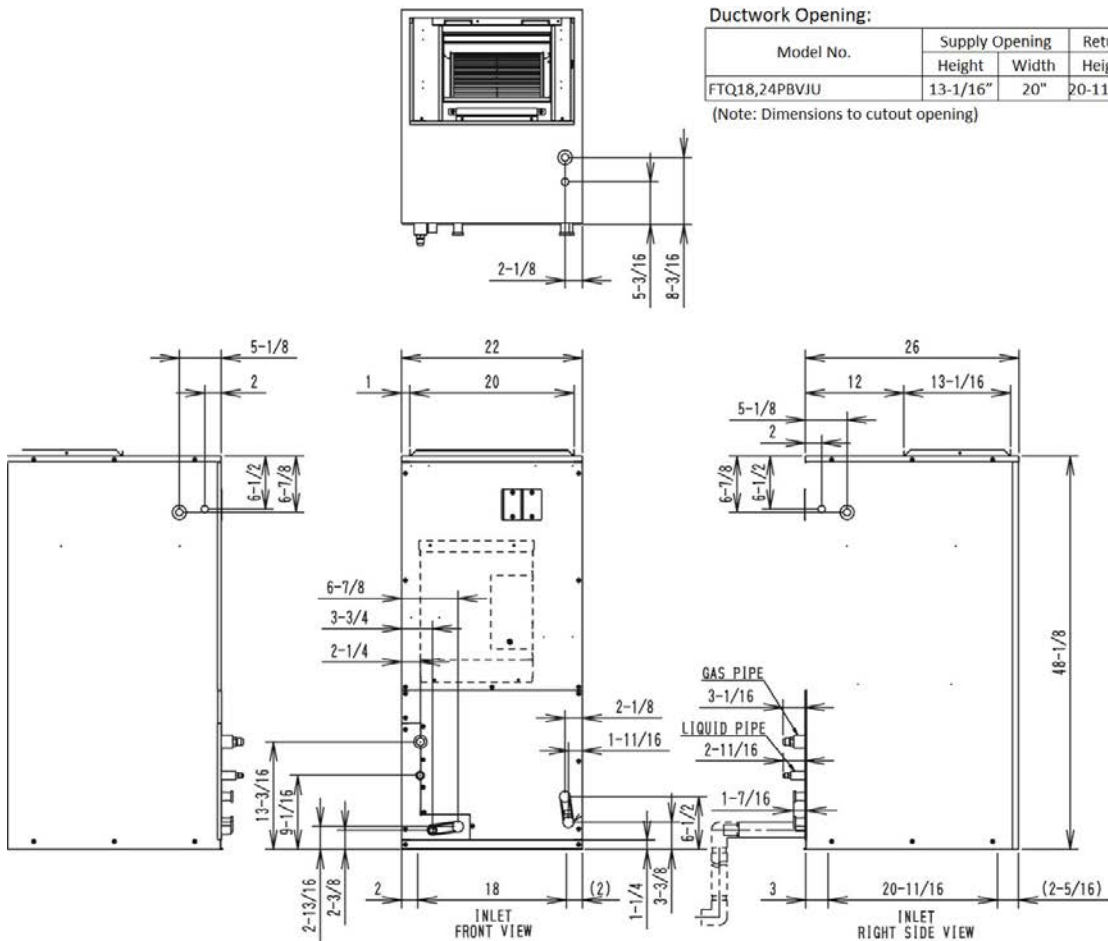
Refrigerant Type:	R-410A	Cooling Operation Range (°F DB):	23 - 115
Holding Refrigerant Charge (lbs):	5.1	Heating Operation Range (°F WB):	0 - 77
Additional Charge (lb/ft):	0.04	Max. Pipe Length (Vertical) (ft):	98
Pre-charge Piping (Length) (ft):	0	Cooling Range w/Baffle (°F DB):	0 - 115
Max. Pipe Length (Total) (ft):	98	Heating Range w/Baffle (°F WB):	0 - 77
Max Height Separation (Ind to Ind ft):	98		

Submittal Data Sheet
 1.5-Ton Inverter Ducted Unit
 FTQ18PBVJURZQ18PVJU9

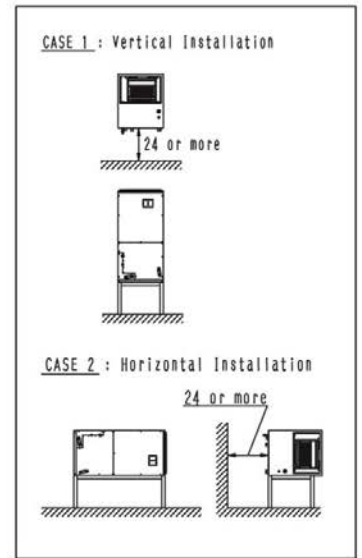
INDOOR UNIT DETAILS

Power Supply (V/Hz/Ph):	208-230 / 60 / 1	Airflow Rate (H/M/L) (CFM):	600/510/420
Power Supply Connections:	L1, L2, Ground	Moisture Removal (Gal/hr):	
Min. Circuit Amps MCA (A):	1.50	Gas Pipe Connection (inch):	5/8
Max Overcurrent Protection (MOP) (A):	15.00	Liquid Pipe Connection (inch):	3/8
Dimensions (HxWxD) (in):	48-1/8 x 22 x 26	Condensate Connection (inch):	1
Panel (HxWxD) (in):		Sound Pressure () (dBA):	
Net Weight (lb):	161	Sound Power Level (dBA):	
Panel Weight (lb):		Ext. Static Pressure (Rated/Max) (inWg):	0.30 / 0.50

DIMENSIONAL DRAWING - INDOOR UNIT



FTQ18/24PBVJU
 Unit: Inches





Submittal Data Sheet

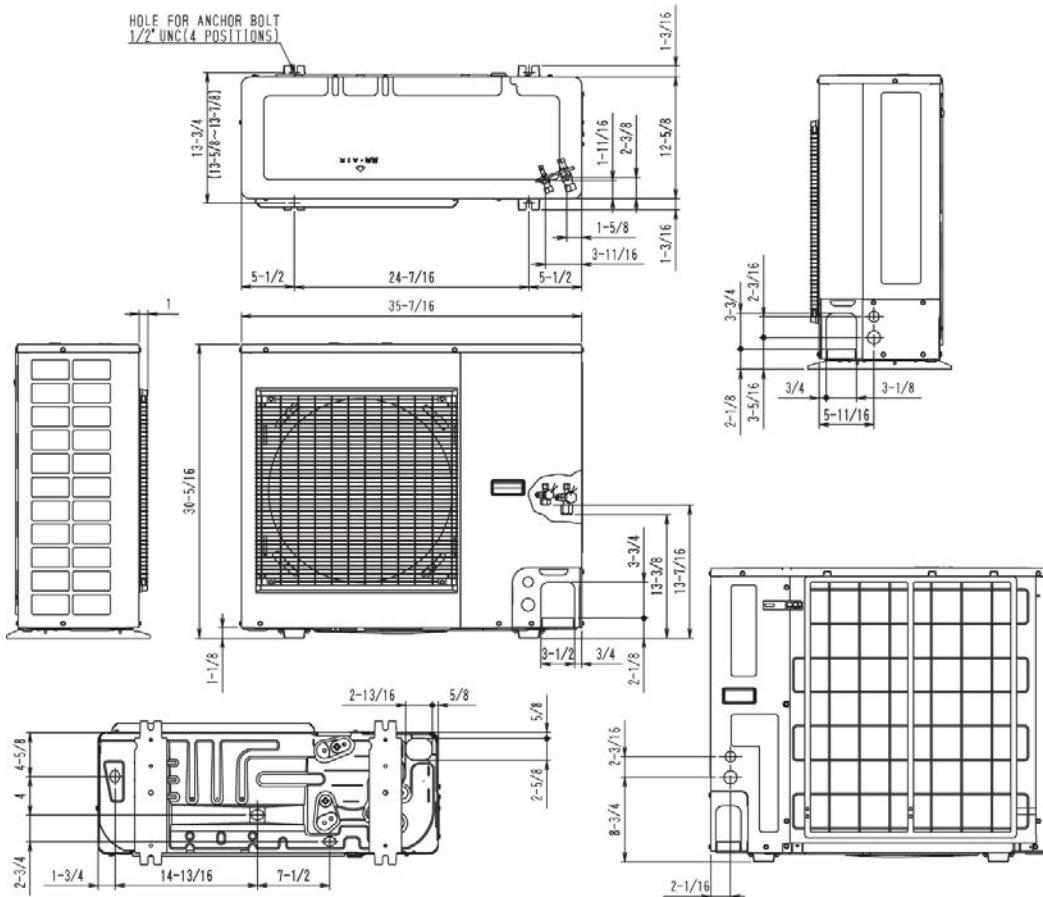
1.5-Ton Inverter Ducted Unit

FTQ18PBVJURZQ18PVJU9

OUTDOOR UNIT DETAILS

Power Supply (V/Hz/Ph):	208-230 / 60 / 1	Compressor Type:	Inverter
Power Supply Connections:	L1, L2, Ground	Capacity Control Range (%):	35 - 100
Min. Circuit Amps MCA (A):	16.50	Airflow Rate (H) (CFM):	1,835
Max Overcurrent Protection (MOP) (A):	20.00	Gas Pipe Connection (inch):	5/8
Max Starting Current MSC(A):		Liquid Pipe Connection (inch):	3/8
Rated Load Amps RLA(A):	7.1	Sound Pressure (H) (dBA):	49
Dimensions (HxWxD) (in):	30-5/16 x 35-7/16 x 12-5/8	Sound Power Level (dBA):	
Net Weight (lb):	150		

DIMENSIONAL DRAWING - OUTDOOR UNIT



Daikin North America LLC, 5151 San Felipe, Suite 500, Houston, TX, 77056

Daikin City Generated Submittal Data

www.daikinac.com www.daikincomfort.com

(Daikin's products are subject to continuous improvements. Daikin reserves the right to modify product design, specifications and information in this data sheet without notice and without incurring any obligations)

Submittal Date: 4/21/2017 1:54:42 PM

Page 4 of 4



Submittal Data Sheet

2.0-Ton Inverter Ducted Unit

FTQ24PBVJURZQ24PVJU9

FEATURES

- Upflow or horizontal right configurations
- Field-installed electric heat options available from 3kW to 15kW

BENEFITS

- Low ambient heat operation down to -4°F

INDOOR UNIT



OUTDOOR UNIT





Submittal Data Sheet

2.0-Ton Inverter Ducted Unit

FTQ24PBVJURZQ24PVJU9

SYSTEM PERFORMANCE

Indoor Unit Model No.	FTQ24PBVJU	Indoor Unit Name:	SKYAIR DUCTED UNITARY - PB SER
Outdoor Unit Model No.	RZQ24PVJU9	Outdoor Unit Name:	2.0-Ton SkyAir Heat Pump
Rated Cooling Capacity (Btu/hr):	24,000	Rated Cooling Conditions:	Indoor (°F DB/WB): 80 / 67 Ambient (°F DB/WB): 95 / 75
Sensible Capacity (Btu/hr):	18,800	Rated Piping Length(ft):	25
Max/Min Cooling Capacity (Btu/hr):	24,000 / 9,000	Rated Height Difference (ft):	98.00
Cooling Input Power (kW):	1.780	Rated Heating Conditions:	Indoor (°F DB/WB): 70 / 70 Ambient (°F DB/WB): 47 / 43
SEER (Non-Ducted/Ducted):	19.00 /	HSPF (Non-Ducted/Ducted):	11.5 /
EER (Non-Ducted/Ducted):	13.50 /	Heating COP (Non-Ducted/Ducted):	3.8 /
Rated Heating Capacity (Btu/hr):	27,000		
Max/Min Heating Capacity (Btu/hr):	27,000 / 9,000		
Heating Input Power (kW):	2.08		

SYSTEM DETAILS

Refrigerant Type:	R-410A	Cooling Operation Range (°F DB):	23 - 115
Holding Refrigerant Charge (lbs):	5.1	Heating Operation Range (°F WB):	0 - 77
Additional Charge (lb/ft):	0.04	Max. Pipe Length (Vertical) (ft):	98
Pre-charge Piping (Length) (ft):	0	Cooling Range w/Baffle (°F DB):	0 - 115
Max. Pipe Length (Total) (ft):	98	Heating Range w/Baffle (°F WB):	0 - 77
Max Height Separation (Ind to Ind ft):	98		

Submittal Data Sheet

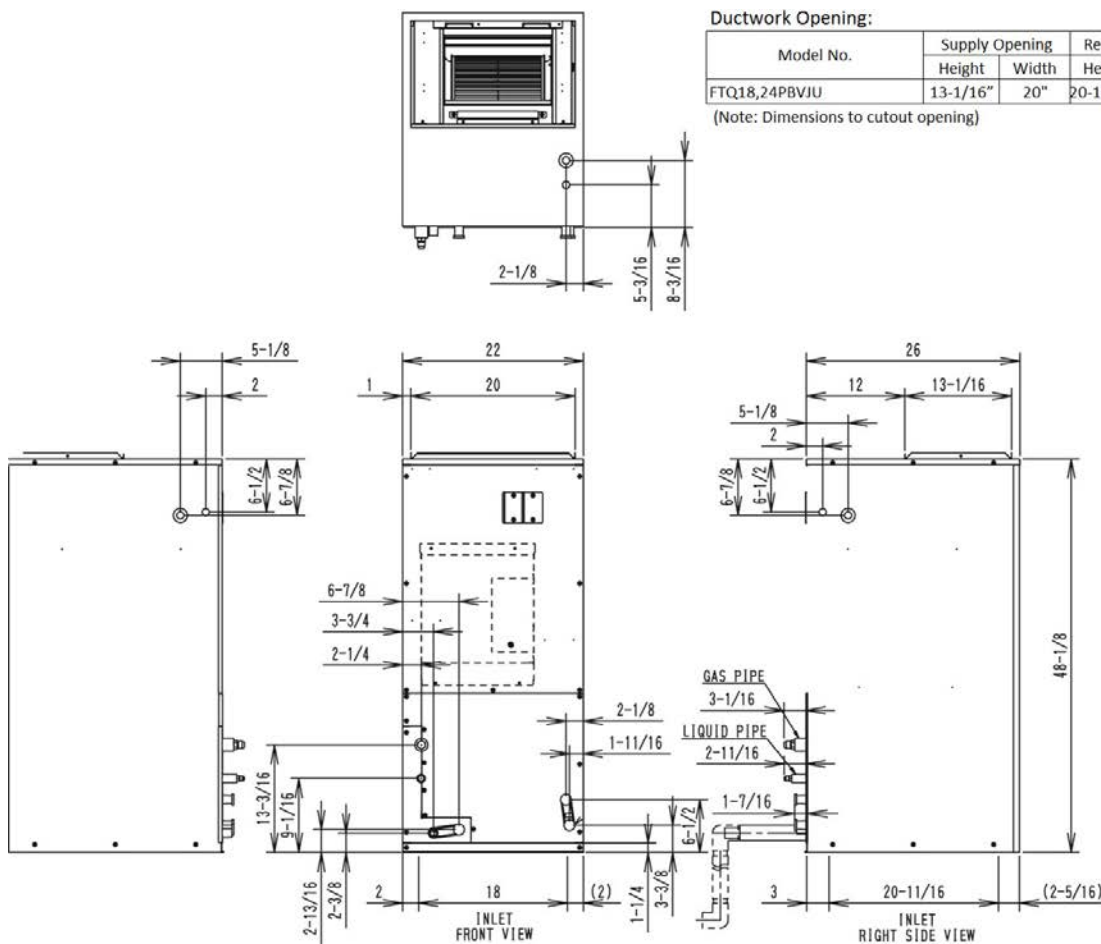
2.0-Ton Inverter Ducted Unit

FTQ24PBVJURZQ24PVJU9

INDOOR UNIT DETAILS

Power Supply (V/Hz/Ph):	208-230 / 60 / 1	Airflow Rate (H/M/L) (CFM):	800/680/560
Power Supply Connections:	L1, L2, Ground	Moisture Removal (Gal/hr):	
Min. Circuit Amps MCA (A):	1.60	Gas Pipe Connection (inch):	5/8
Max Overcurrent Protection (MOP) (A):	15.00	Liquid Pipe Connection (inch):	3/8
Dimensions (HxWxD) (in):	53-1/4 x 22 x 26	Condensate Connection (inch):	1
Panel (HxWxD) (in):		Sound Pressure () (dBA):	
Net Weight (lb):	192	Sound Power Level (dBA):	
Panel Weight (lb):		Ext. Static Pressure (Rated/Max) (inWg):	0.30 / 0.50

DIMENSIONAL DRAWING - INDOOR UNIT

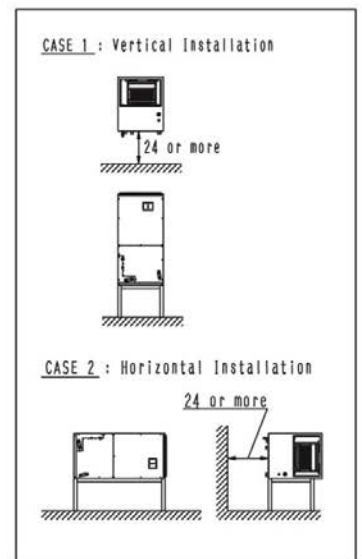


Ductwork Opening:

Model No.	Supply Opening		Return Opening	
	Height	Width	Height	Width
FTQ18,24PBVJU	13-1/16"	20"	20-11/16"	18"

(Note: Dimensions to cutout opening)

FTQ18/24PBVJU
Unit: Inches





Submittal Data Sheet

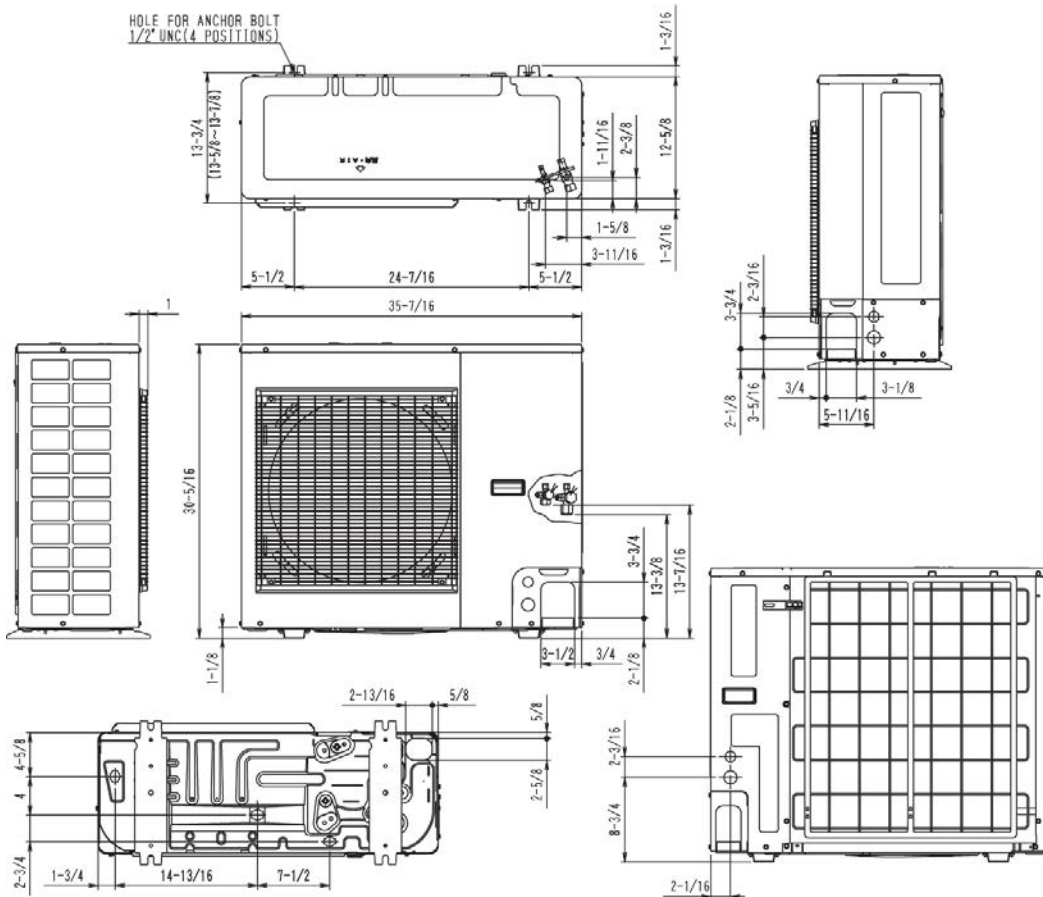
2.0-Ton Inverter Ducted Unit

FTQ24PBVJURZQ24PVJU9

OUTDOOR UNIT DETAILS

Power Supply (V/Hz/Ph):	208-230 / 60 / 1	Compressor Type:	Inverter
Power Supply Connections:	L1, L2, Ground	Capacity Control Range (%):	30 - 100
Min. Circuit Amps MCA (A):	16.50	Airflow Rate (H) (CFM):	1,835
Max Overcurrent Protection (MOP) (A):	20.00	Gas Pipe Connection (inch):	5/8
Max Starting Current MSC(A):		Liquid Pipe Connection (inch):	3/8
Rated Load Amps RLA(A):	10.3	Sound Pressure (H) (dBA):	49
Dimensions (HxWxD) (in):	30-5/16 x 35-7/16 x 12-5/8	Sound Power Level (dBA):	
Net Weight (lb):	150		

DIMENSIONAL DRAWING - OUTDOOR UNIT



Daikin North America LLC, 5151 San Felipe, Suite 500, Houston, TX, 77056

Daikin City Generated Submittal Data

www.daikinac.com www.daikincomfort.com

(Daikin's products are subject to continuous improvements. Daikin reserves the right to modify product design, specifications and information in this data sheet without notice and without incurring any obligations)

Submittal Date: 4/21/2017 8:11:39 AM

Page 4 of 4



Submittal Data Sheet

2.5-Ton Inverter Ducted Unit

FTQ30PBVJURZQ30PVJU9

FEATURES

- Low ambient heat operation down to -4°F
- Upflow or horizontal right configurations
- Field-installed electric heat options available form 3kW to 15kW
- 10 year limited parts and compressor warranty

BENEFITS

- Quiet operation

INDOOR UNIT



OUTDOOR UNIT





Submittal Data Sheet

2.5-Ton Inverter Ducted Unit

FTQ30PBVJURZQ30PVJU9

SYSTEM PERFORMANCE

Indoor Unit Model No.	FTQ30PBVJU	Indoor Unit Name:	FTQ30PBVJU
Outdoor Unit Model No.	RZQ30PVJU9	Outdoor Unit Name:	2.5-Ton SkyAir Heat Pump
Rated Cooling Capacity (Btu/hr):	30,000	Rated Cooling Conditions:	Indoor (°F DB/WB): 80 / 67 Ambient (°F DB/WB): 95 / 75
Sensible Capacity (Btu/hr):	22,000	Rated Piping Length(ft):	25
Max/Min Cooling Capacity (Btu/hr):	30,000 / 12,000	Rated Height Difference (ft):	164.00
Cooling Input Power (kW):	2.220	Rated Heating Conditions:	Indoor (°F DB/WB): 70 / 70 Ambient (°F DB/WB): 47 / 43
SEER (Non-Ducted/Ducted):	19.50 /	HSPF (Non-Ducted/Ducted):	10.0 /
EER (Non-Ducted/Ducted):	13.50 /	Heating COP (Non-Ducted/Ducted):	3.7 /
Rated Heating Capacity (Btu/hr):	34,000		
Max/Min Heating Capacity (Btu/hr):	34,000 / 12,000		
Heating Input Power (kW):	2.69		

SYSTEM DETAILS

Refrigerant Type:	R-410A	Cooling Operation Range (°F DB):	23 - 115
Holding Refrigerant Charge (lbs):	8.8	Heating Operation Range (°F WB):	0 - 77
Additional Charge (lb/ft):	0.04	Max. Pipe Length (Vertical) (ft):	164
Pre-charge Piping (Length) (ft):	0	Cooling Range w/Baffle (°F DB):	0 - 115
Max. Pipe Length (Total) (ft):	230	Heating Range w/Baffle (°F WB):	- 77
Max Height Separation (Ind to Ind ft):	164		

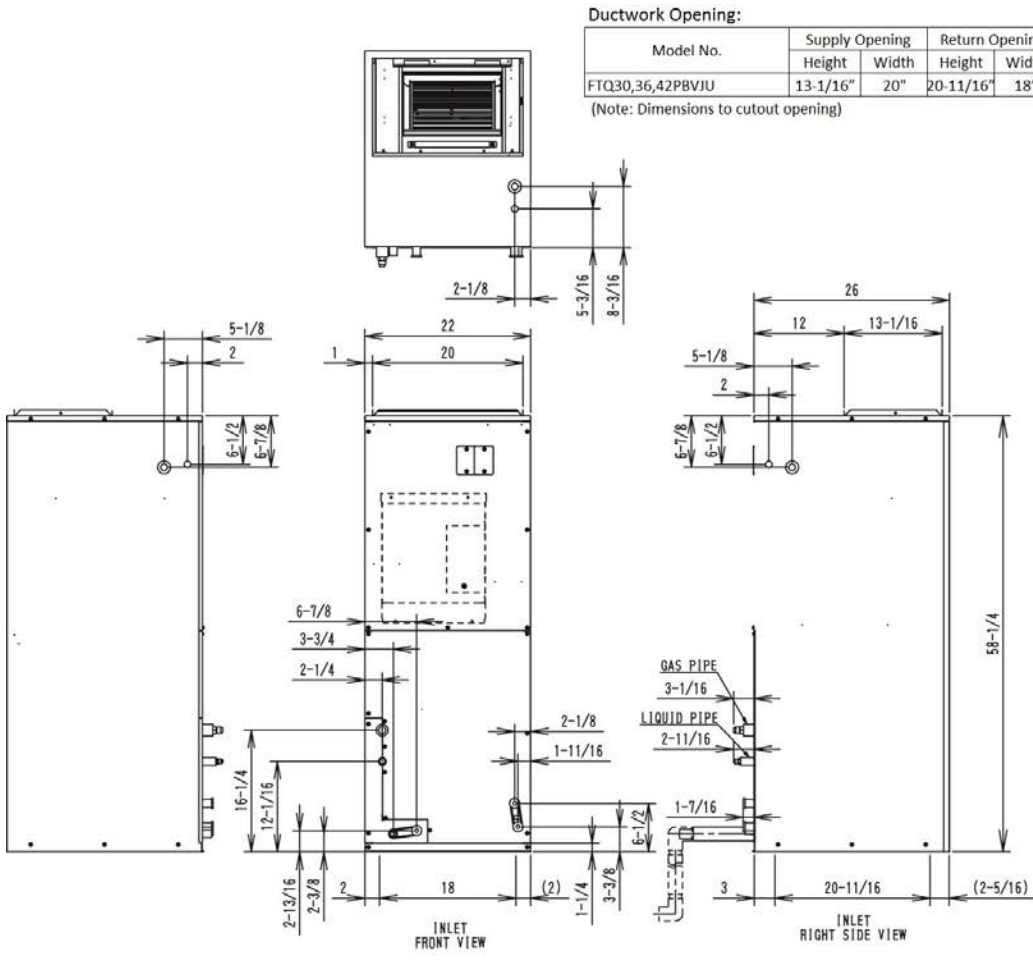
Submittal Data Sheet

2.5-Ton Inverter Ducted Unit
FTQ30PBVJURZQ30PVJU9

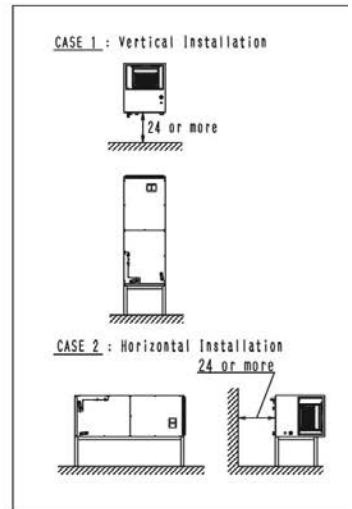
INDOOR UNIT DETAILS

Power Supply (V/Hz/Ph):	208-230 / 60 / 1	Airflow Rate (H/M/L) (CFM):	1,000/850/700
Power Supply Connections:	L1, L2, Ground	Moisture Removal (Gal/hr):	
Min. Circuit Amps MCA (A):	2.30	Gas Pipe Connection (inch):	5/8
Max Overcurrent Protection (MOP) (A):	15.00	Liquid Pipe Connection (inch):	3/8
Dimensions (HxWxD) (in):	58-1/4 x 22 x 26	Condensate Connection (inch):	1
Panel (HxWxD) (in):		Sound Pressure () (dBA):	
Net Weight (lb):	192	Sound Power Level (dBA):	
Panel Weight (lb):		Ext. Static Pressure (Rated/Max) (inWg):	0.30 / 0.50

DIMENSIONAL DRAWING - INDOOR UNIT



FTQ30/36/42PBVJU
Unit: Inches



Daikin North America LLC, 5151 San Felipe, Suite 500, Houston, TX, 77056

Daikin City Generated Submittal Data

www.daikinac.com www.daikincomfort.com

(Daikin's products are subject to continuous improvements. Daikin reserves the right to modify product design, specifications and information in this data sheet without notice and without incurring any obligations)

Submittal Date: 4/21/2017 1:14:09 PM

Page 3 of 4



Submittal Data Sheet

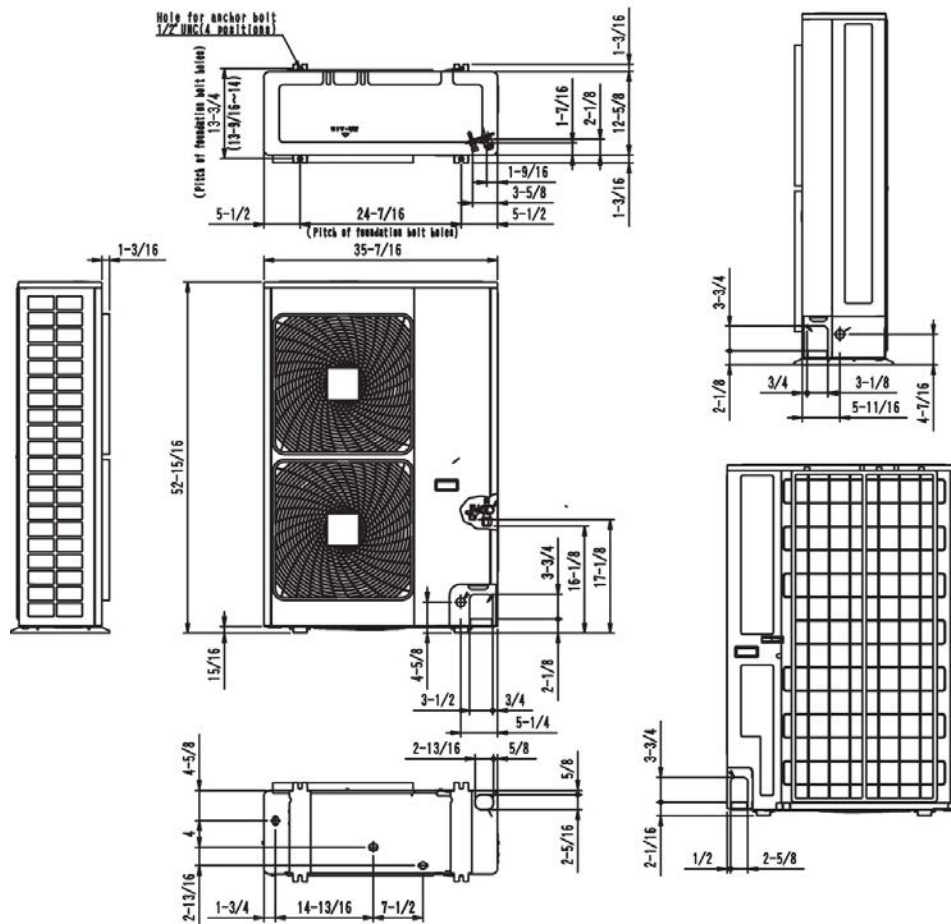
2.5-Ton Inverter Ducted Unit

FTQ30PBVJURZQ30PVJU9

OUTDOOR UNIT DETAILS

Power Supply (V/Hz/Ph):	208-230 / 60 / 1	Compressor Type:	Inverter
Power Supply Connections:	L1, L2, Ground	Capacity Control Range (%):	30 - 100
Min. Circuit Amps MCA (A):	27.00	Airflow Rate (H) (CFM):	3,740
Max Overcurrent Protection (MOP) (A):	30.00	Gas Pipe Connection (inch):	5/8
Max Starting Current MSC(A):		Liquid Pipe Connection (inch):	3/8
Rated Load Amps RLA(A):	15.7	Sound Pressure (H) (dBA):	58
Dimensions (HxWxD) (in):	52-15/16 x 35-7/16 x 12-5/8	Sound Power Level (dBA):	
Net Weight (lb):	283		

DIMENSIONAL DRAWING - OUTDOOR UNIT



Daikin North America LLC, 5151 San Felipe, Suite 500, Houston, TX, 77056

Daikin City Generated Submittal Data

www.daikinac.com www.daikincomfort.com

(Daikin's products are subject to continuous improvements. Daikin reserves the right to modify product design, specifications and information in this data sheet without notice and without incurring any obligations)

Submittal Date: 4/21/2017 1:14:09 PM

Page 4 of 4



Submittal Data Sheet

3.0-Ton Inverter Ducted Unit

FTQ36PBVJURZQ36PVJU9

FEATURES

- Low ambient heat operation down to -4°F
- Upflow or horizontal right configurations
- Field-installed electric heat options available from 3kW to 15kW
- 10 year limited parts and compressor warranty

BENEFITS

- Quiet operation

INDOOR UNIT



OUTDOOR UNIT





Submittal Data Sheet

3.0-Ton Inverter Ducted Unit

FTQ36PBVJURZQ36PVJU9

SYSTEM PERFORMANCE

Indoor Unit Model No.	FTQ36PBVJU	Indoor Unit Name:	SKYAIR DUCTED UNITARY - PB SER
Outdoor Unit Model No.	RZQ36PVJU9	Outdoor Unit Name:	3.0-Ton SkyAir Heat Pump
Rated Cooling Capacity (Btu/hr):	36,000	Rated Cooling Conditions:	Indoor (°F DB/WB): 80 / 67 Ambient (°F DB/WB): 95 / 75
Sensible Capacity (Btu/hr):	25,000	Rated Piping Length(ft):	25
Max/Min Cooling Capacity (Btu/hr):	36,000 / 12,000	Rated Height Difference (ft):	164.00
Cooling Input Power (kW):	2.880	Rated Heating Conditions:	Indoor (°F DB/WB): 70 / 70 Ambient (°F DB/WB): 47 / 43
SEER (Non-Ducted/Ducted):	18.00 /	HSPF (Non-Ducted/Ducted):	9.5 /
EER (Non-Ducted/Ducted):	12.50 /	Heating COP (Non-Ducted/Ducted):	3.6 /
Rated Heating Capacity (Btu/hr):	40,000		
Max/Min Heating Capacity (Btu/hr):	40,000 / 12,000		
Heating Input Power (kW):	3.26		

SYSTEM DETAILS

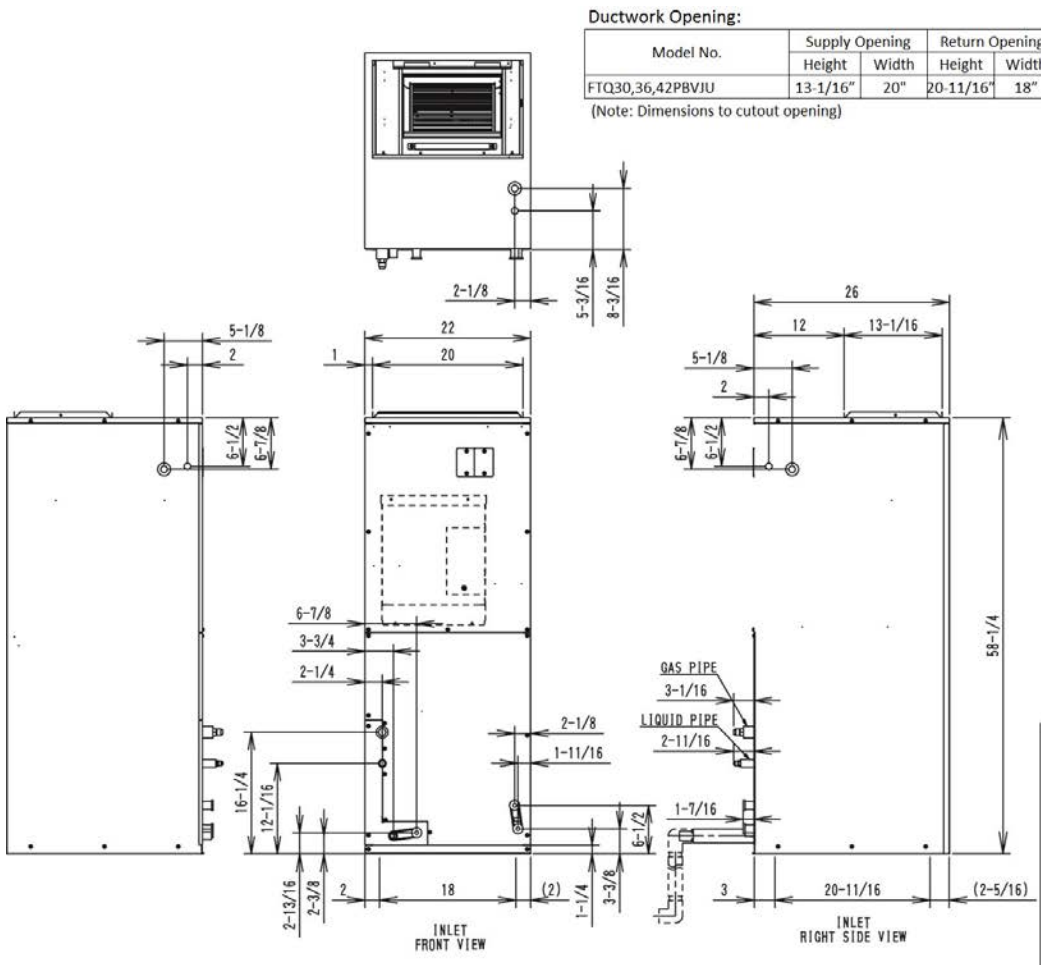
Refrigerant Type:	R-410A	Cooling Operation Range (°F DB):	23 - 115
Holding Refrigerant Charge (lbs):	8.8	Heating Operation Range (°F WB):	0 - 77
Additional Charge (lb/ft):	0.04	Max. Pipe Length (Vertical) (ft):	164
Pre-charge Piping (Length) (ft):	0	Cooling Range w/Baffle (°F DB):	0 - 115
Max. Pipe Length (Total) (ft):	230	Heating Range w/Baffle (°F WB):	0 - 77
Max Height Separation (Ind to Ind ft):	164		

Submittal Data Sheet
 3.0-Ton Inverter Ducted Unit
 FTQ36PBVJURZQ36PVJU9

INDOOR UNIT DETAILS

Power Supply (V/Hz/Ph):	208-230 / 60 / 1	Airflow Rate (H/M/L) (CFM):	1,200/1,020/840
Power Supply Connections:	L1, L2, Ground	Moisture Removal (Gal/hr):	
Min. Circuit Amps MCA (A):	2.80	Gas Pipe Connection (inch):	5/8
Max Overcurrent Protection (MOP) (A):	15.00	Liquid Pipe Connection (inch):	3/8
Dimensions (HxWxD) (in):	58-1/4 x 22 x 26	Condensate Connection (inch):	1
Panel (HxWxD) (in):		Sound Pressure () (dBA):	
Net Weight (lb):	192	Sound Power Level (dBA):	
Panel Weight (lb):		Ext. Static Pressure (Rated/Max) (inWg):	0.30 / 0.50

DIMENSIONAL DRAWING - INDOOR UNIT

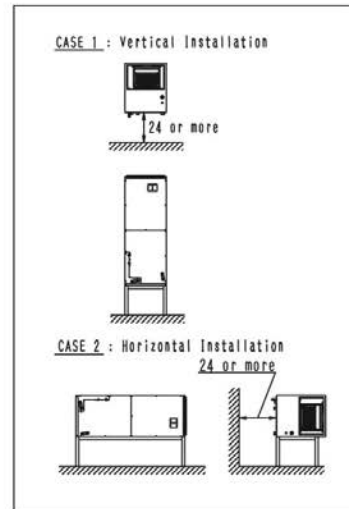


Ductwork Opening:

Model No.	Supply Opening		Return Opening	
	Height	Width	Height	Width
FTQ30,36,42PBVJU	13-1/16"	20"	20-11/16"	18"

(Note: Dimensions to cutout opening)

FTQ30/36/42PBVJU
 Unit: Inches





Submittal Data Sheet

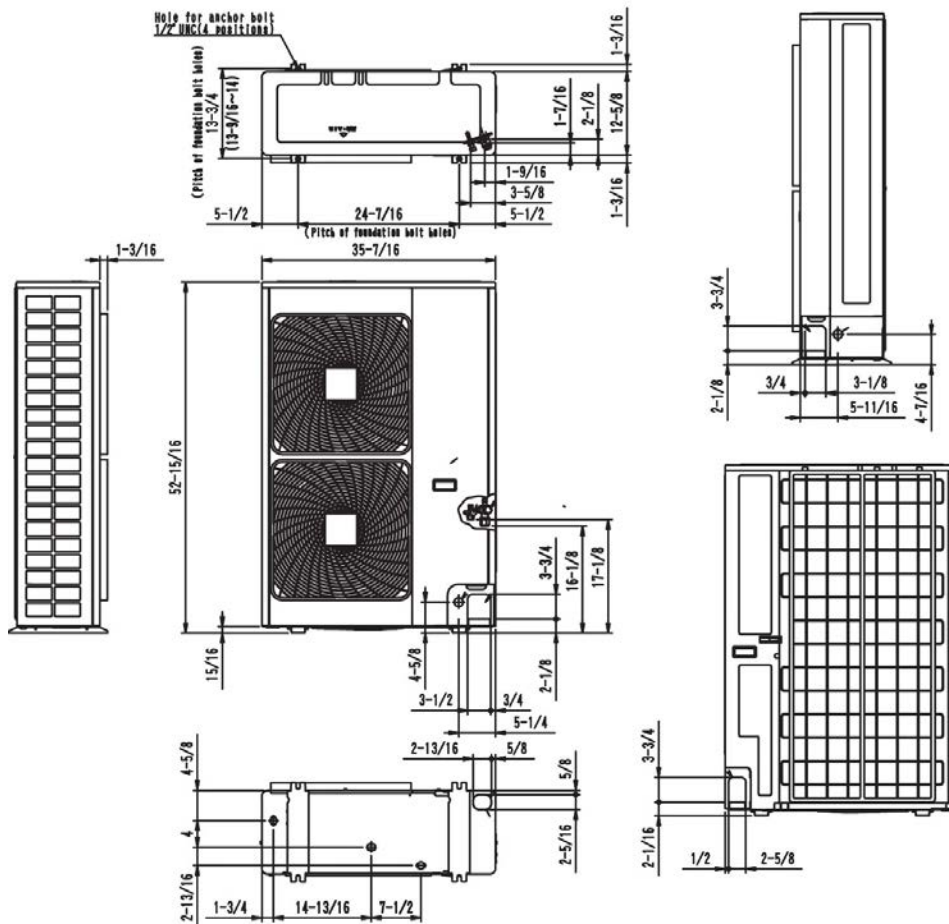
3.0-Ton Inverter Ducted Unit

FTQ36PBVJURZQ36PVJU9

OUTDOOR UNIT DETAILS

Power Supply (V/Hz/Ph):	208-230 / 60 / 1	Compressor Type:	Inverter
Power Supply Connections:	L1, L2, Ground	Capacity Control Range (%):	25 - 100
Min. Circuit Amps MCA (A):	27.00	Airflow Rate (H) (CFM):	3,740
Max Overcurrent Protection (MOP) (A):	30.00	Gas Pipe Connection (inch):	5/8
Max Starting Current MSC(A):		Liquid Pipe Connection (inch):	3/8
Rated Load Amps RLA(A):	18.6	Sound Pressure (H) (dBA):	58
Dimensions (HxWxD) (in):	52-15/16 x 35-7/16 x 12-5/8	Sound Power Level (dBA):	
Net Weight (lb):	283		

DIMENSIONAL DRAWING - OUTDOOR UNIT





Submittal Data Sheet

3.5-Ton Inverter Ducted Unit

FTQ42PBVJURZQ42PVJU9

FEATURES

- Low ambient heat operation down to -4°F
- Upflow or horizontal right configurations
- Field-installed electric heat options available from 3kW to 15kW
- 10 year limited parts and compressor warranty

BENEFITS

- Quiet operation

INDOOR UNIT



OUTDOOR UNIT





Submittal Data Sheet

3.5-Ton Inverter Ducted Unit

FTQ42PBVJURZQ42PVJU9

SYSTEM PERFORMANCE

Indoor Unit Model No.	FTQ42PBVJU	Indoor Unit Name:	FTQ42PBVJU
Outdoor Unit Model No.	RZQ42PVJU9	Outdoor Unit Name:	3.5-Ton SkyAir Heat Pump
Rated Cooling Capacity (Btu/hr):	40,000	Rated Cooling Conditions:	Indoor (°F DB/WB): 80 / 67 Ambient (°F DB/WB): 95 / 75
Sensible Capacity (Btu/hr):	27,900	Rated Piping Length(ft):	25
Max/Min Cooling Capacity (Btu/hr):	42,000 / 12,000	Rated Height Difference (ft):	164.00
Cooling Input Power (kW):	3.590	Rated Heating Conditions:	Indoor (°F DB/WB): 70 / 70 Ambient (°F DB/WB): 47 / 43
SEER (Non-Ducted/Ducted):	17.00 /	HSPF (Non-Ducted/Ducted):	9.0 /
EER (Non-Ducted/Ducted):	12.00 /	Heating COP (Non-Ducted/Ducted):	3.2 /
Rated Heating Capacity (Btu/hr):	47,000		
Max/Min Heating Capacity (Btu/hr):	47,000 / 12,000		
Heating Input Power (kW):	4.30		

SYSTEM DETAILS

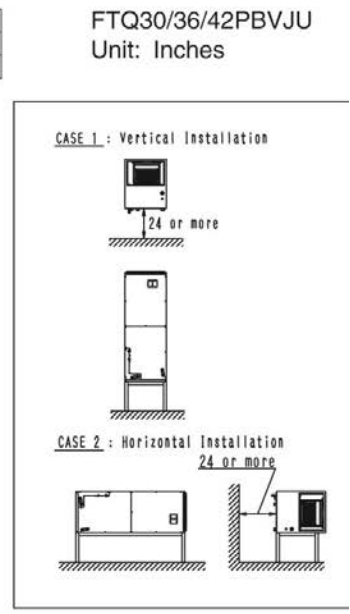
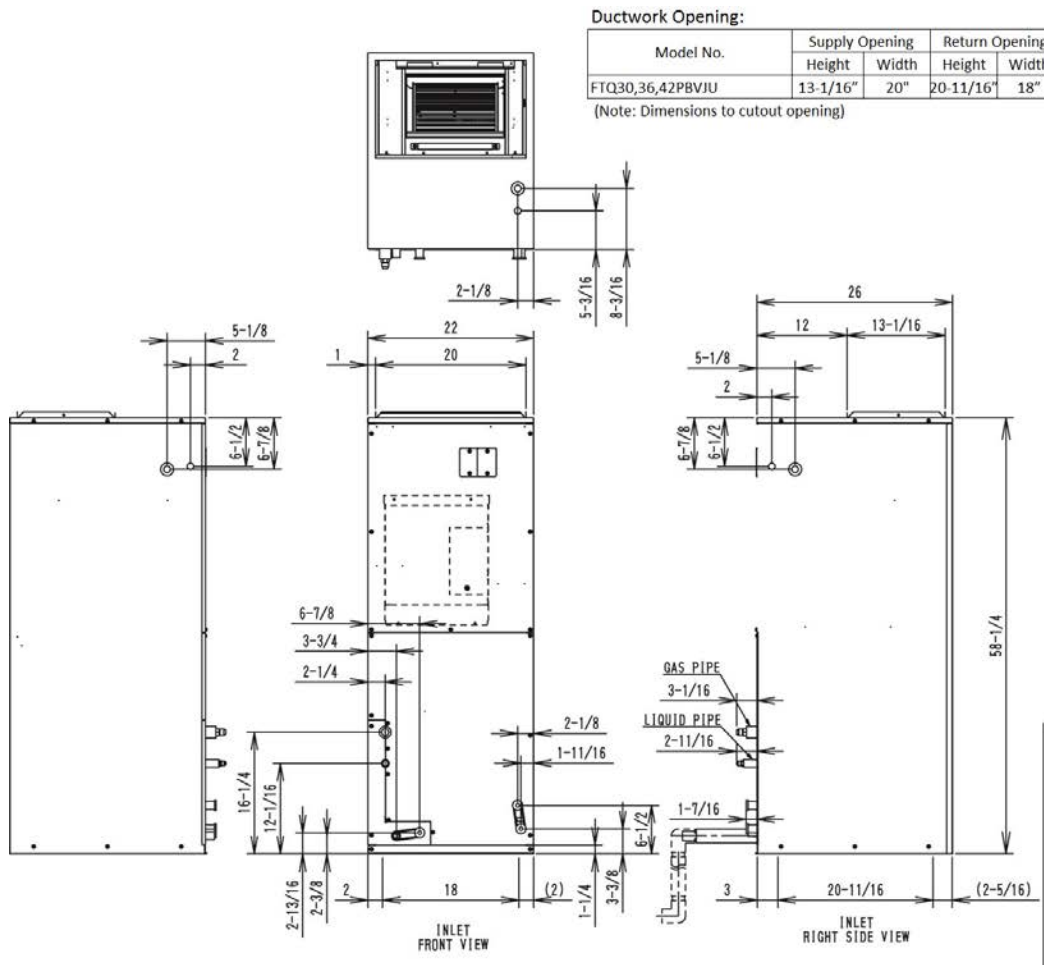
Refrigerant Type:	R-410A	Cooling Operation Range (°F DB):	23 - 115
Holding Refrigerant Charge (lbs):	8.8	Heating Operation Range (°F WB):	0 - 77
Additional Charge (lb/ft):	0.04	Max. Pipe Length (Vertical) (ft):	164
Pre-charge Piping (Length) (ft):	0	Cooling Range w/Baffle (°F DB):	0 - 115
Max. Pipe Length (Total) (ft):	230	Heating Range w/Baffle (°F WB):	0 - 77
Max Height Separation (Ind to Ind ft):	164		

Submittal Data Sheet
 3.5-Ton Inverter Ducted Unit
 FTQ42PBVJURZQ42PVJU9

INDOOR UNIT DETAILS

Power Supply (V/Hz/Ph):	208-230 / 60 / 1	Airflow Rate (H/M/L) (CFM):	1,400/1,190/980
Power Supply Connections:	L1, L2, Ground	Moisture Removal (Gal/hr):	
Min. Circuit Amps MCA (A):	3.60	Gas Pipe Connection (inch):	5/8
Max Overcurrent Protection (MOP) (A):	15.00	Liquid Pipe Connection (inch):	3/8
Dimensions (HxWxD) (in):	58-1/4 x 22 x 26	Condensate Connection (inch):	1
Panel (HxWxD) (in):		Sound Pressure () (dBA):	
Net Weight (lb):	203	Sound Power Level (dBA):	
Panel Weight (lb):		Ext. Static Pressure (Rated/Max) (inWg):	0.30 / 0.50

DIMENSIONAL DRAWING - INDOOR UNIT





Submittal Data Sheet

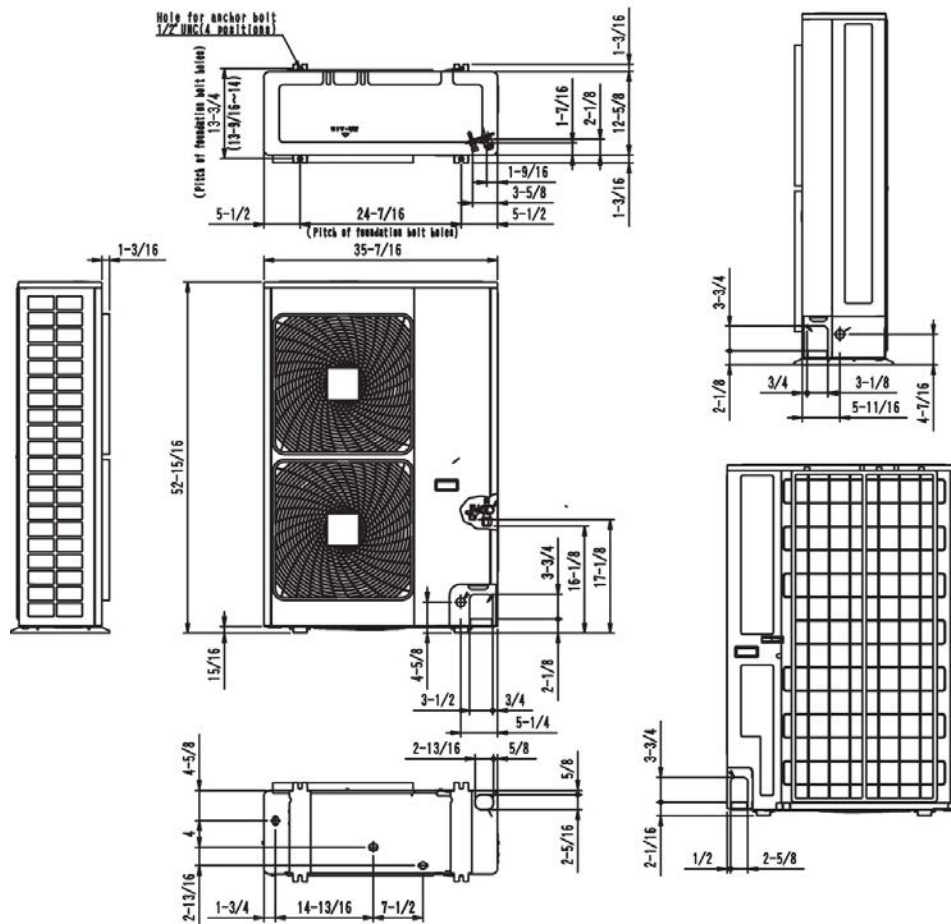
3.5-Ton Inverter Ducted Unit

FTQ42PBVJURZQ42PVJU9

OUTDOOR UNIT DETAILS

Power Supply (V/Hz/Ph):	208-230 / 60 / 1	Compressor Type:	Inverter
Power Supply Connections:	L1, L2, Ground	Capacity Control Range (%):	25 - 100
Min. Circuit Amps MCA (A):	27.00	Airflow Rate (H) (CFM):	3,740
Max Overcurrent Protection (MOP) (A):	30.00	Gas Pipe Connection (inch):	5/8
Max Starting Current MSC(A):		Liquid Pipe Connection (inch):	3/8
Rated Load Amps RLA(A):	19.6	Sound Pressure (H) (dBA):	58
Dimensions (HxWxD) (in):	52-15/16 x 35-7/16 x 12-5/8	Sound Power Level (dBA):	
Net Weight (lb):	283		

DIMENSIONAL DRAWING - OUTDOOR UNIT



Daikin North America LLC, 5151 San Felipe, Suite 500, Houston, TX, 77056

Daikin City Generated Submittal Data

www.daikinac.com www.daikincomfort.com

(Daikin's products are subject to continuous improvements. Daikin reserves the right to modify product design, specifications and information in this data sheet without notice and without incurring any obligations)

Submittal Date: 4/21/2017 1:56:36 PM

Page 4 of 4